



# CORINS

*Construction Records Information Service*

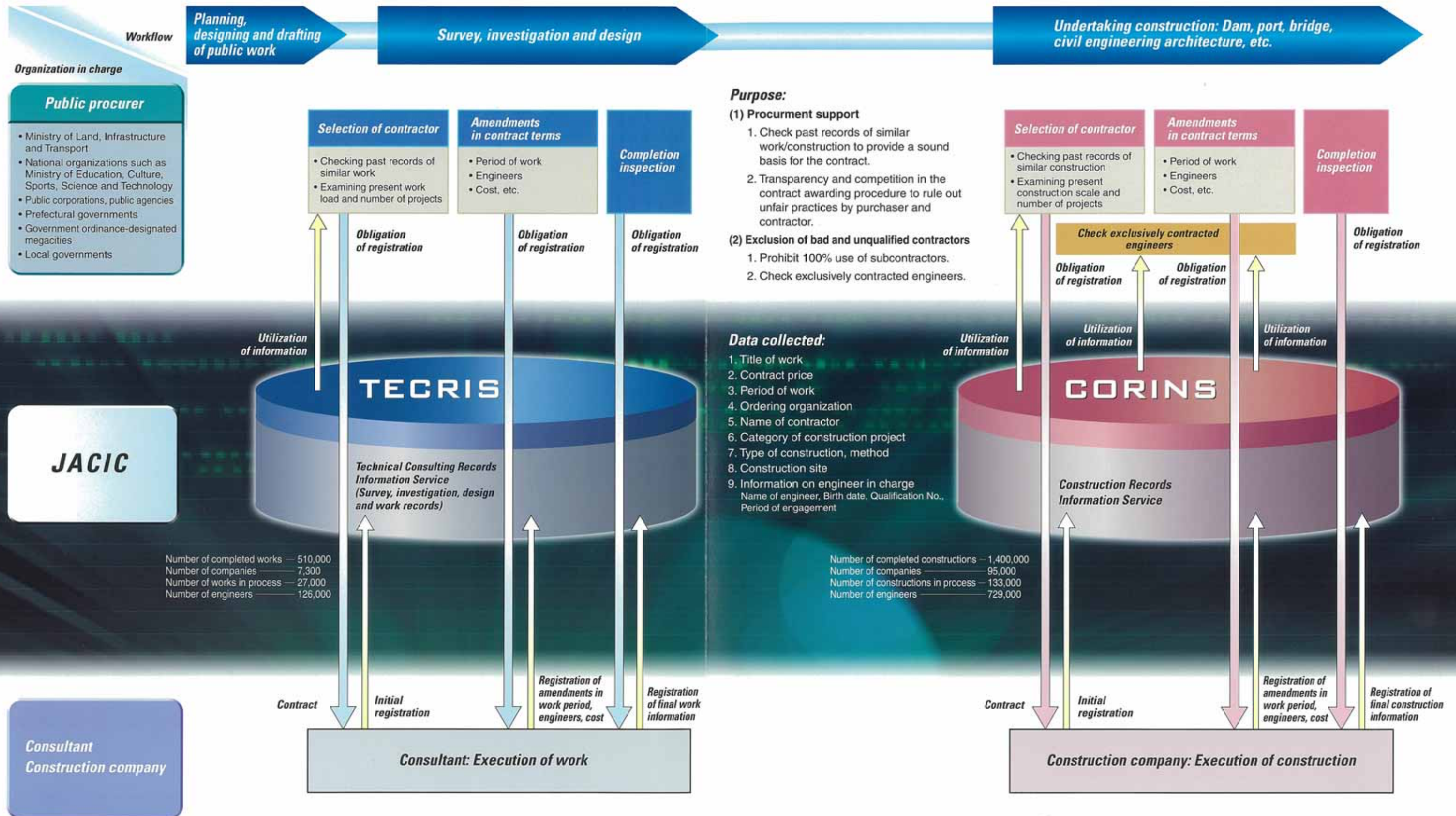
# TECRIS

*Technical Consulting Records Information Service*

JACIC

*Japan Construction Information Center*

# OUTLINE OF TECRIS / CORINS





# 8

## Construction Record Information Service (CORINS) / Technical Consulting Records Information Service (TECRIS)



### Construction Record Information Service (CORINS)

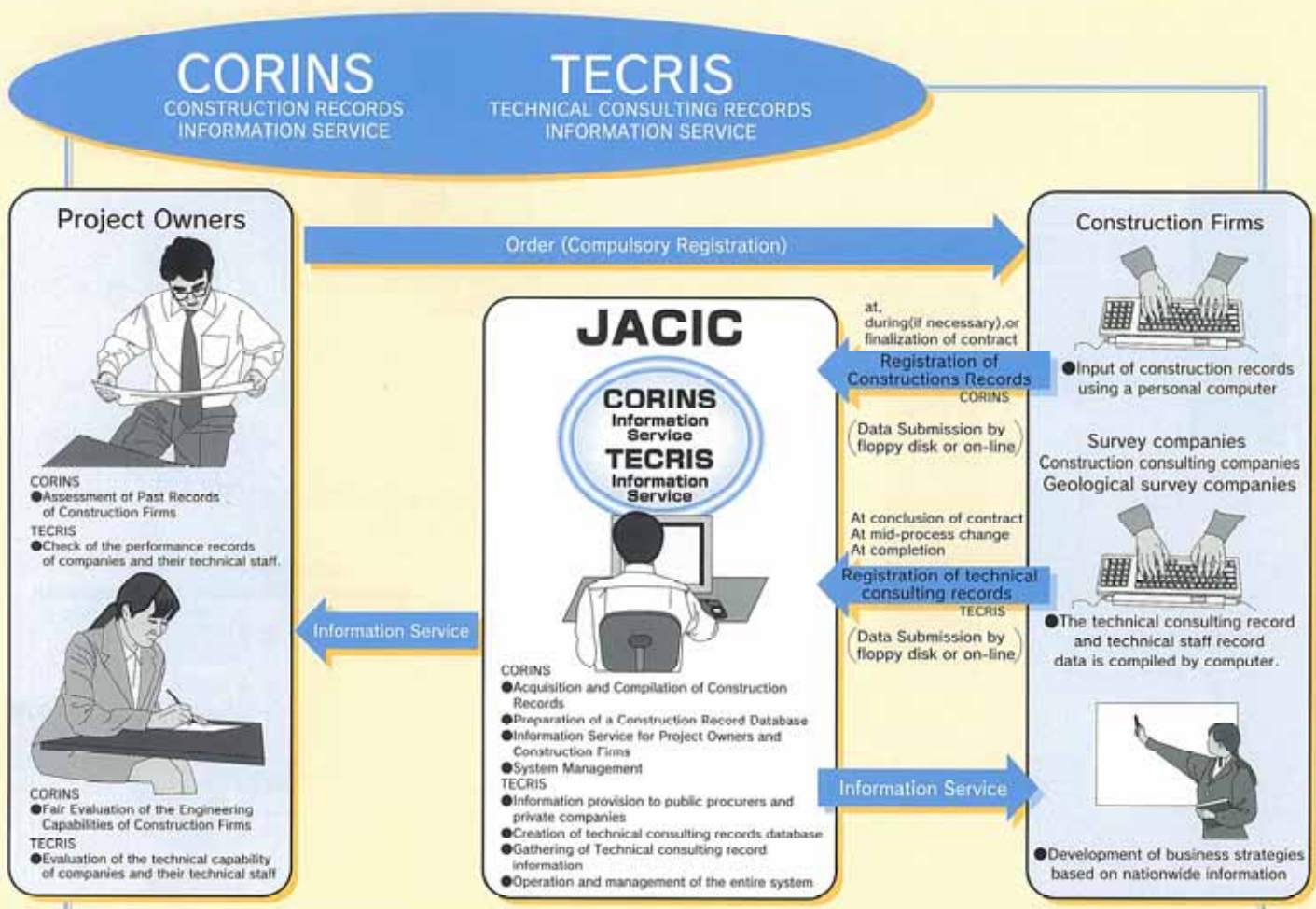
CORINS is a construction record database for a variety of public bodies, to respond to a growing need for greater transparency, fairer competition and increased objectivity in bidding and contract award procedures for public works projects.

The CORINS center has accumulated: a) data at completion of construction work contracted in fiscal 1990-1994 with contracts valued at 50 million yen or more; b) data at contract awarding, at midway change, and at completion for works contracted in 1995-1996; and c) the data of works with a contract price of 25 million yen or over contracted in fiscal 1997 or later. They were compiled into the database and are now offered for use by public sector procurers.

Included is the general data, such as the title of a project, the contract value, and the technical data, such as the project size and the technical features.

As of end of March, 2001, approximately 50,000 construction companies were registered and the number of project registrations amounts to about 880,000. Also, integrated information combining the CORINS data and company information possessed by the Construction Industry Engineers Center, etc. is being offered since October, 1996, through a procurer-assisting database system (JCIS).

The number of public-sector procurers using these services totals 41 for the CORINS systems and 78 for the JCIS system, as of April, 2001.



The amount of data registered on-line for CORINS is 37% and for TECRIS it is 49% of the total. (as of December 2000)

## ■ Technical Consulting Records Information Service (TECRIS)

TECRIS is a technical consulting record database which assures greater transparency, objectivity and fairer competition for the awarding of consultant projects and in the selection of consultants with high technical competence.

Since fiscal 1995, the TECRIS center has accumulated technical staff record and technical consulting record data at conclusion of contract, at mid changes, and at the completion of each project with at a value of five million yen or more from the national government, local governments, public corporations, or public utility corporations, based on the registrations submitted by construction consultant companies. The data is now offered to public sector procurers.

Registration of survey work began in October 1996 and the gathering of technical data by work fields began in October 1999, through which information retrieval from technical viewpoints has become feasible.

As of end of March, 2001, approximately 6,700 construction consultant companies, about 360,000 technical consulting records, and about 104,000 technical engineers are registered.

The number of public purchasers using the TECRIS service totaled to 42, as of April, 2001.

The CORINS service is an effective tool to retrieve accurate data of past construction project records in a particular region as well as records of relevant projects to assess the engineering capabilities of potential contractors. It is also a support tool for the execution of various types of tender and contract procedures (open competitive tenders, proposal submission and bids from interested parties). Construction firms can have the benefit of registering data to attract to potential project owners. Construction firms can also use CORINS data for planning their business strategies, referring to the past record of projects contracted by particular project owners.

The TECRIS service is a valuable evaluation tool for public-sector organizations starting contracting procedures for technical consulting services on the basis of proposals or selective bidding systems. The database permits effective retrieval of business records consulting firm's and their engineering staff.

The number of organizations utilizing information services

	CORINS	JCIS	TECRIS
National organizations	16	3	15
Public corporations, public agencies	6	6	7
Prefectural governments	11	36	11
Government ordinance-designated megacities	1	8	1
Cities, Wards, Towns, Villages	6	22	6
Other entities	1	3	2
Total	41	78	42

As of April, 2001

## CORINS/TECRIS - Data that is collected

CORINS data items		TECRIS data items	
General data	With or without registration when contracted CORINS registration No. Date of mid-process change Contract type Obligation of registration Title of work Route name, river name, etc. Contract price Period of work Code of public purchaser Name of public purchaser Office/Section in charge Person in charge Code of work contract Procurement Type VE · ISO Contractor Construction sector of project Category of construction project Type of construction work Code number for work, method, process, etc. Construction site Was night work necessary? Traffic regulation Construction in proximity Engineer's name · section JV companies	Information on technical consulting records	Designation of work Primary work content TECRIS registration number Codes for architectural drawings Ordering organization Contractor Contract value Type of contract Execution period Area of work Route name, river name, etc. Field of work Technical data by fields Managing engineer Check engineer Engineer in charge Key words Outline of work
	Technical data	Information on engineers	Name of engineer Birth date Graduation details/year Qualifications: Professional Engineer RCCM Geo-survey Engineer Survey Engineer Other qualifications Other evaluation items