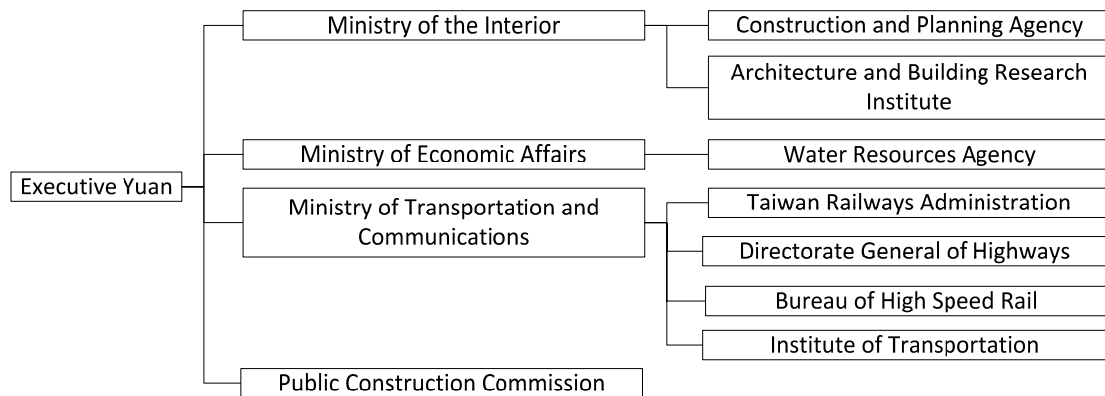


Organization View of Construction Industry and Construction IT

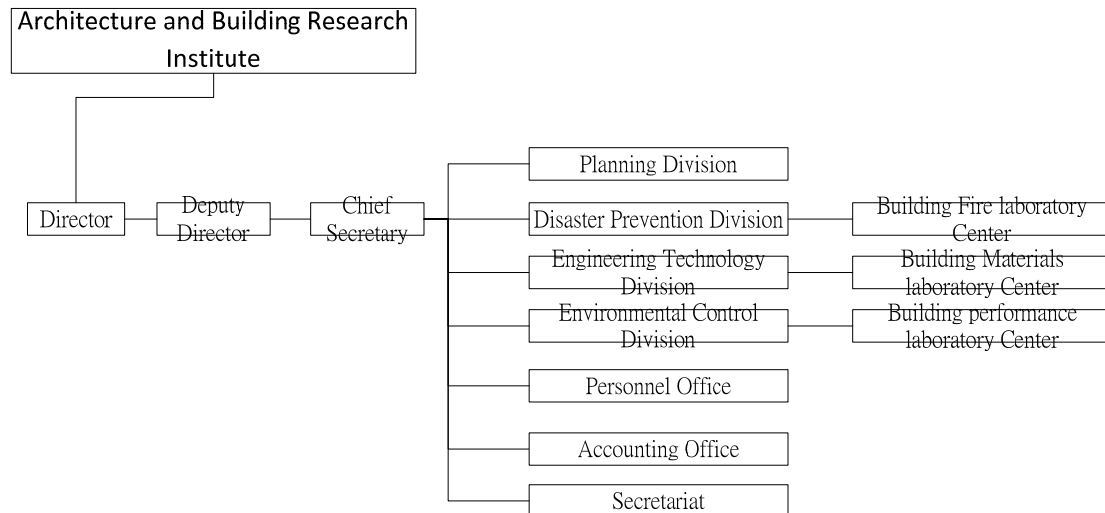
Government Agencies



Click on the following links to view their organization structures:

- [Construction and Planning Agency, Ministry of the Interior](#)
- [Water Resources Agency, Ministry of Economic Affairs](#)
- [Taiwan Railways Administration, Ministry of Transportation and Communications](#)
- [Directorate General of Highways, Ministry of Transportation and Communications](#)
- [Bureau of High Speed Rail, Ministry of Transportation and Communications](#)
- [Institute of Transportation, Ministry of Transportation and Communications](#)
- [Public Construction Commission, Executive Yuan](#)

Architecture and Building Research Institute, Ministry of the Interior



Professional Associations

Architects

The National Association of Architects, R.O.C.

- Taiwan Architects Association
- Taipei Architects Association
- Kaohsiung Architects Association
- Fuchien Architects Association

Civil Engineers

Chinese Union of Professional Civil Engineer Association

Taiwan Professional Civil Engineers Association

Taipei Professional Civil Engineers Association

Kaohsiung Professional Civil Engineers Association

Structural Engineers

Chinese Union of Professional Structural Engineer Association

Taiwan Professional Structural Engineers Association

Taipei Professional Structural Engineers Association

Kaohsiung Professional Structural Engineers Association

Geotechnical Engineers

Taiwan Professional Geotechnical Engineers Association

Taipei Professional Geotechnical Engineers Association

Hydraulic Engineers

Chinese Union of Professional Hydraulic Engineer Association

Taiwan Professional Hydraulic Engineers Association

Taipei Professional Hydraulic Engineers Association

Kaohsiung Professional Hydraulic Engineers Association

Engineering Consultants

Chinese Association of Engineering Consultants

Contractors

[Chinese National Association of General Contractors](#)

All of the above associations, except the National Association of Architects (which is only assembly of delegates from its sub-associations), have similar organization structures. Usually the association consists of Board of Directors (BOD), Board of Supervisors, and Secretariat. Among BOD members, the President is elected to lead the association. Under BOD, several professional, technical, or service committees (e.g., IT committee) may be established.

Institutions and Societies

There are many construction related institutes and societies in Taiwan. The following list should not be regarded a complete one. All of them, except TCRI, have similar organization structures with the associations listed in the previous section. Many of them have IT committees under their BOD.

[Taiwan Construction Research Institute \(TCRI\)*](#)

Chinese Institute of Civil and Hydraulic Engineering

Architecture Institute of Republic of China

Chinese Society of Structural Engineers

Chinese Taiwan Society for Earthquake Engineering

Taiwan Geotechnical Society

Chinese Taipei Tunneling Association

Taiwan Society of Public Works
Chinese Institute of Transportation
Intelligent Transportation Society of Taiwan
Construction Management Association of the Republic of China

* Name with hyperlink to its organization structure.