

Recent Developments of Construction IT in Hong Kong

Professor LI Heng

Contents

1. The Size of the Industry
2. The Use of BIM in Hong Kong
3. The ESD the e-Government/Service platform (www.esd.gov.hk)
4. The Works Bureau's framework
5. Summary

1. The Size of HK construction industry

Year	GDP	Work Force
2000	4.71%	10.2%
2001	4.4%	10.8%
2002	4.0%	15.8%
2003	3.64%	19%
2004	3.13%	16%
2005	2.79%	12.9%
2006	2.65%	11.2%
2007	3.83%	13.4%
2008	4.82%	16.7%

HK is also one of the most free economies in the world, because of this, the Government does not believe in enforcing many regulations and standards.

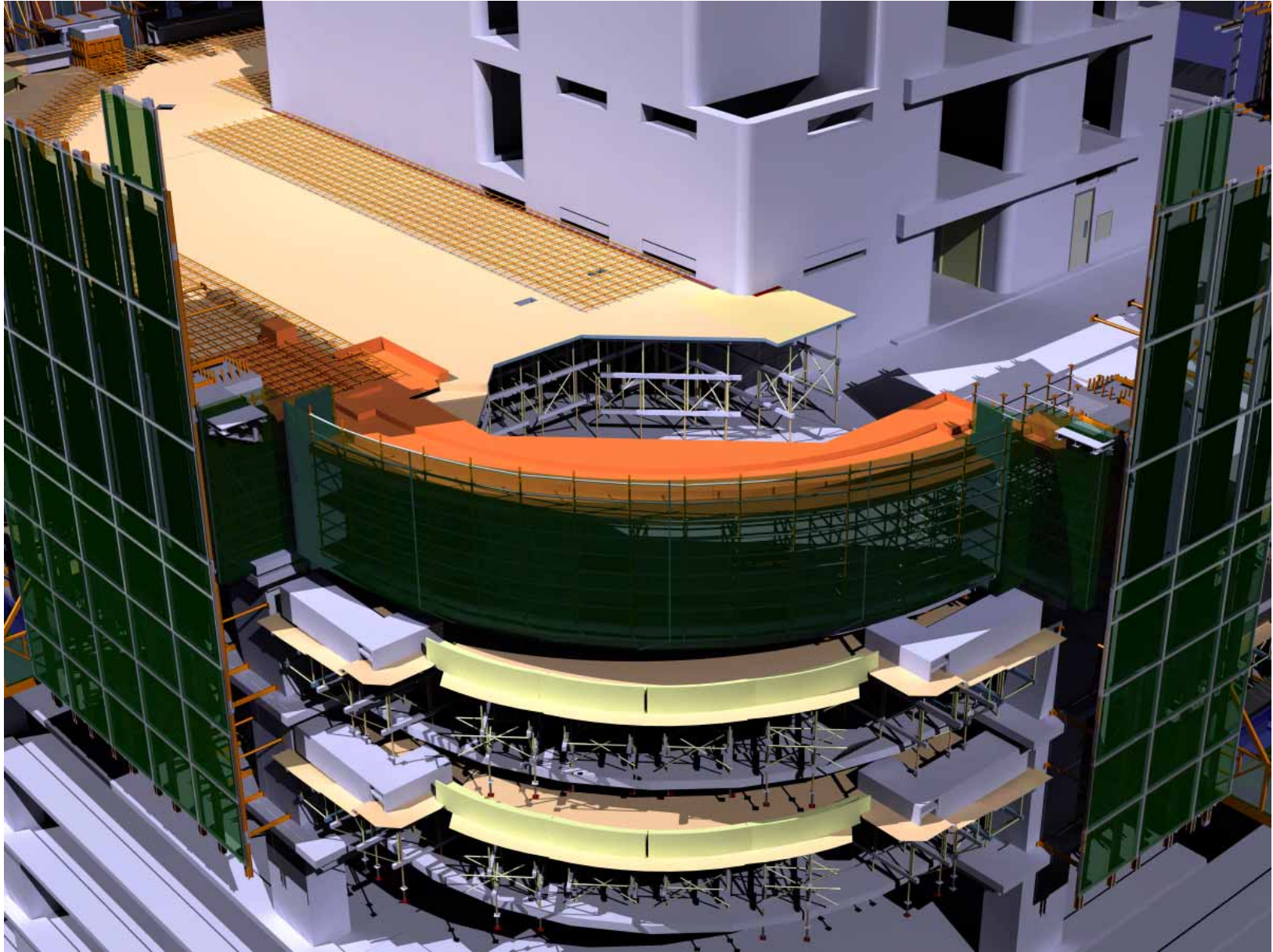
2. The Use of BIM technology

2.1 The use of BIM in public projects

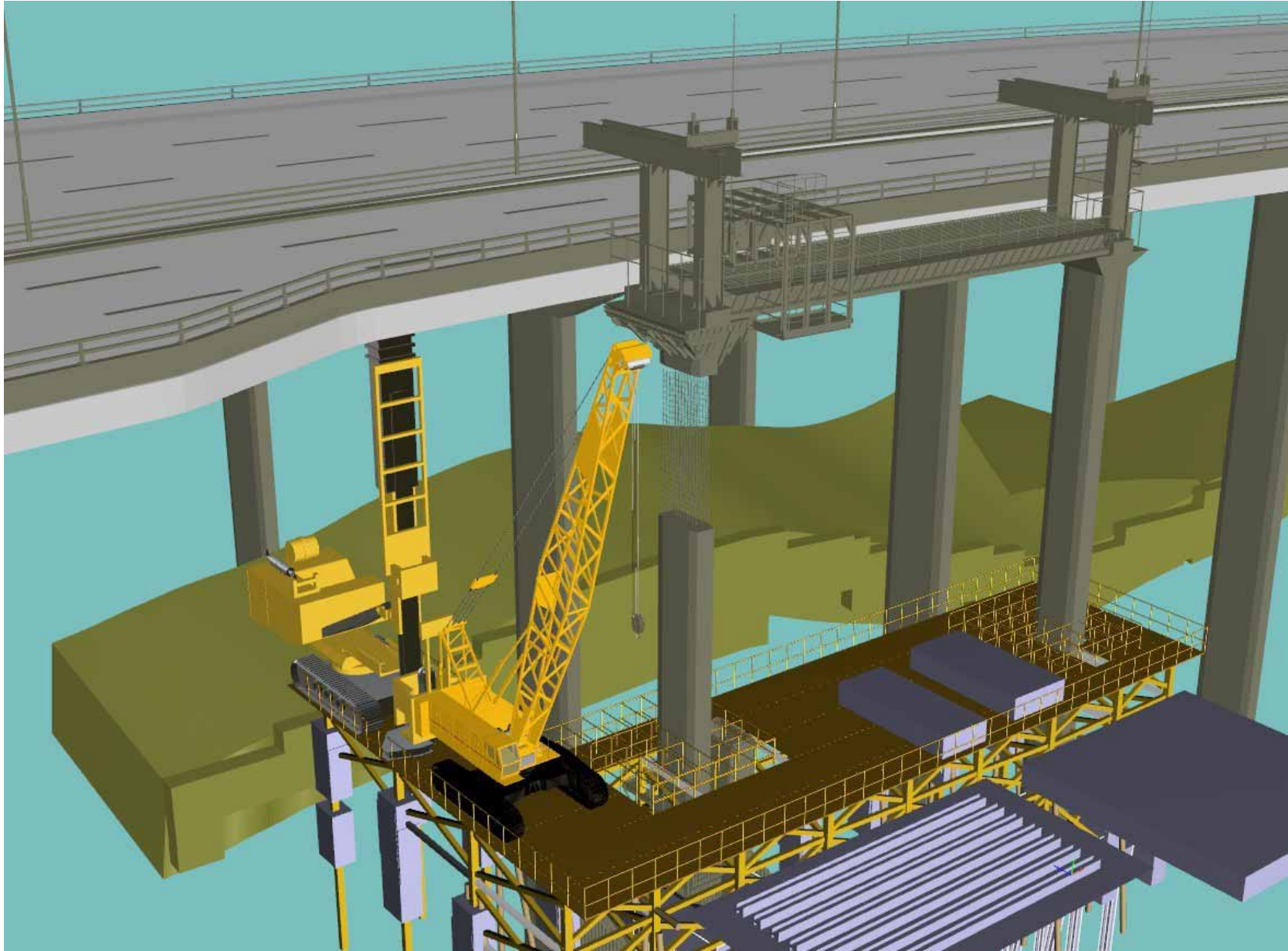
- The housing authority requires that all of its projects to be designed and managed using BIM from 2010), now only 30% of the projects are using BIM.
- The ASD (Architectural Services Department), which is responsible for Public Buildings other than residential buildings, also will enforce the use of BIM from mid 2010.

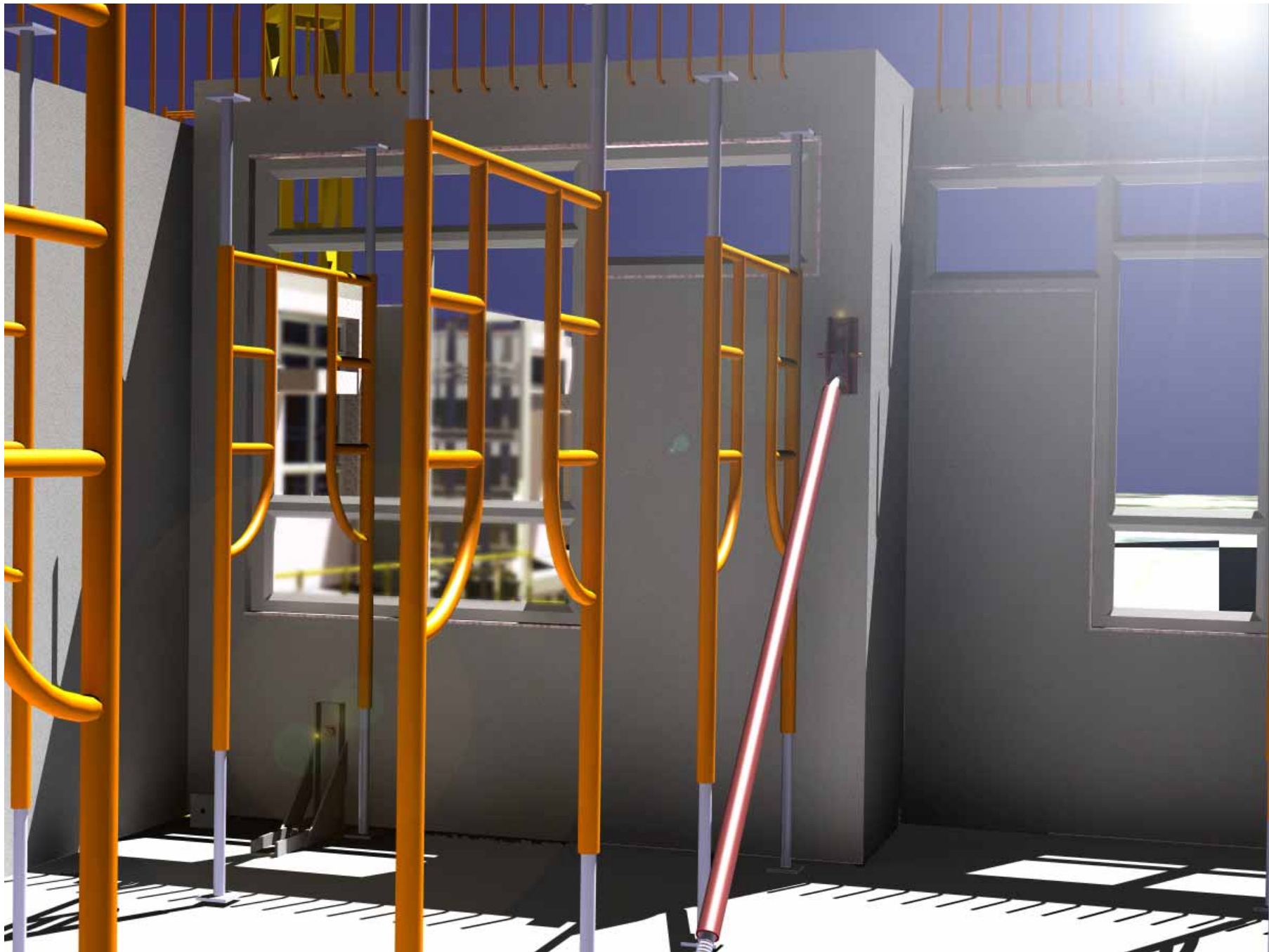
2.2 The private sector

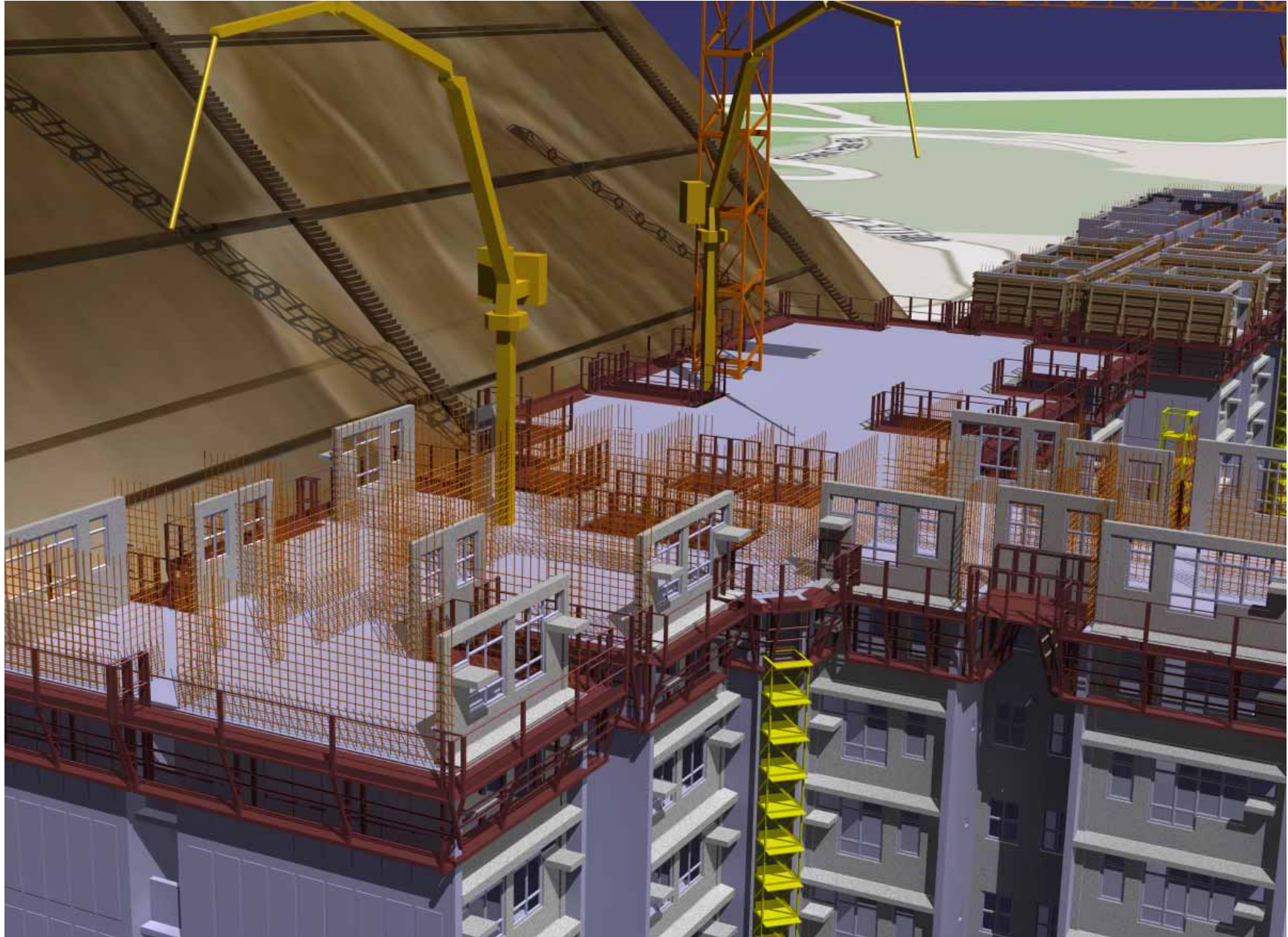
- The private sector, however, has been leading the use of BIM. For example, the Gammon construction Ltd, the China State Construction Ltd. has been using the BIM technology since 2003.

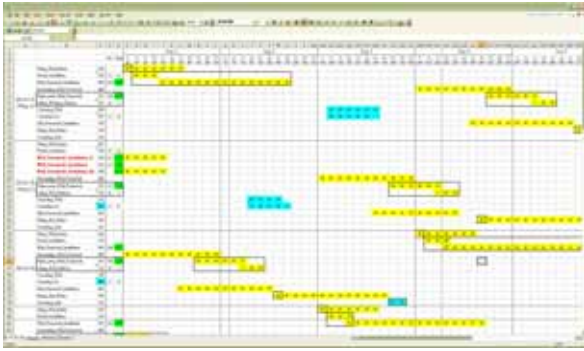




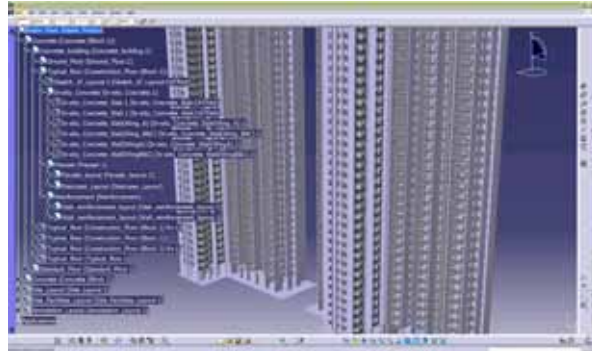








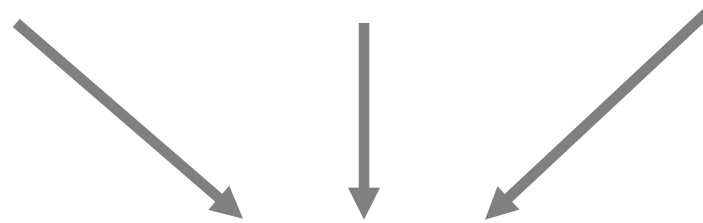
Schedule and plan



BIM

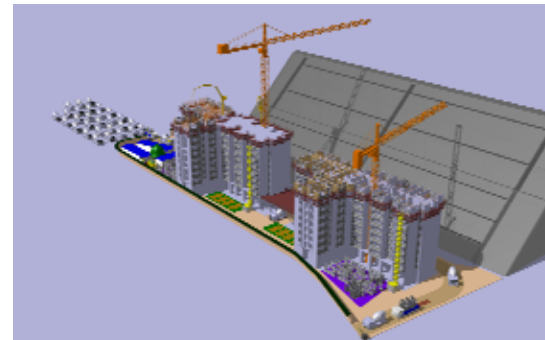
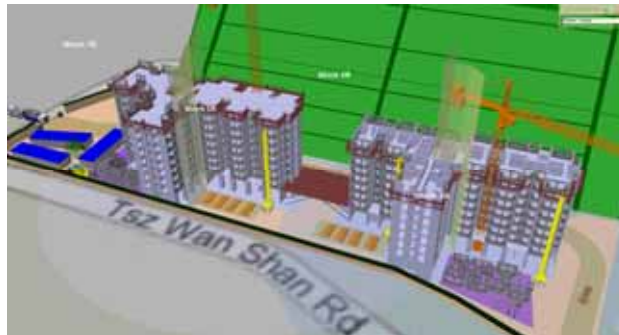


资源模型库



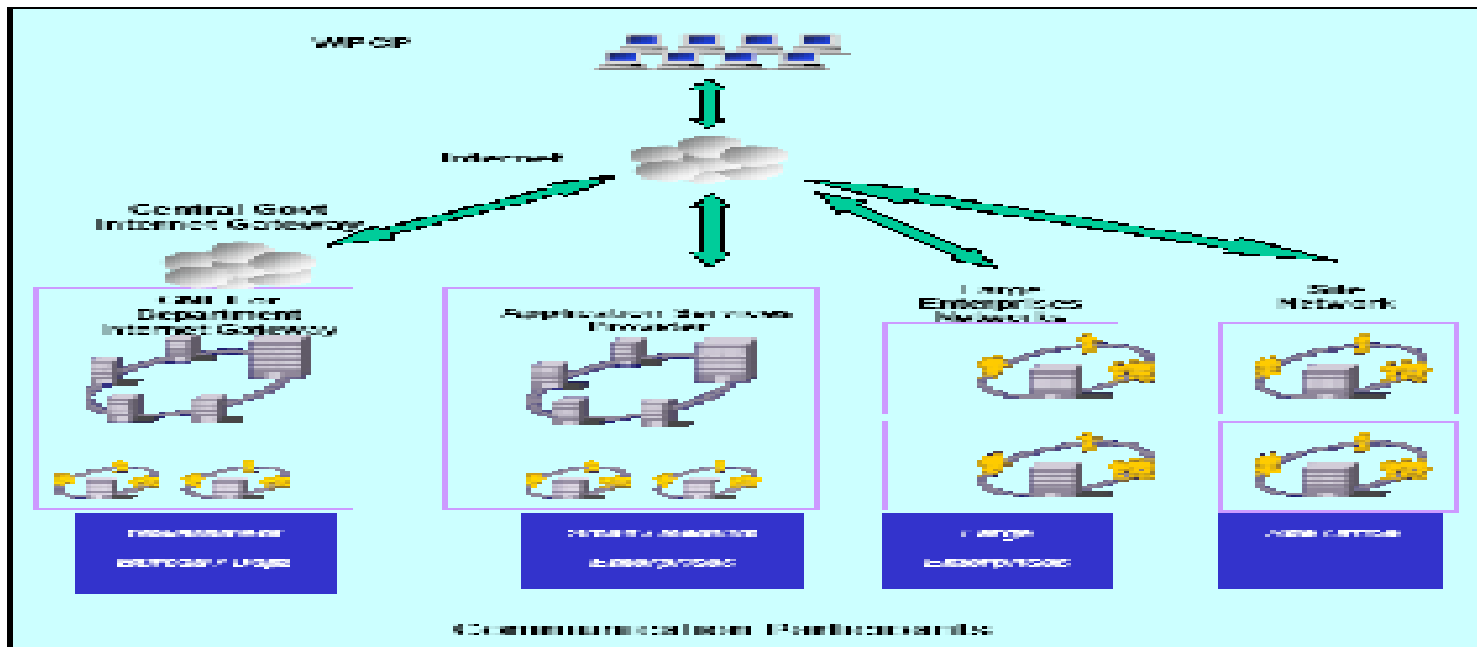
Virtual Construction

- 工地临设
- 施工设备
- 临时支撑
- 塔吊
- 工人
- 工作空间
- 作业安全
- 运输



The Construction Virtual
prototyping Lab, under my
leadership is 100% funded by the
private sector.

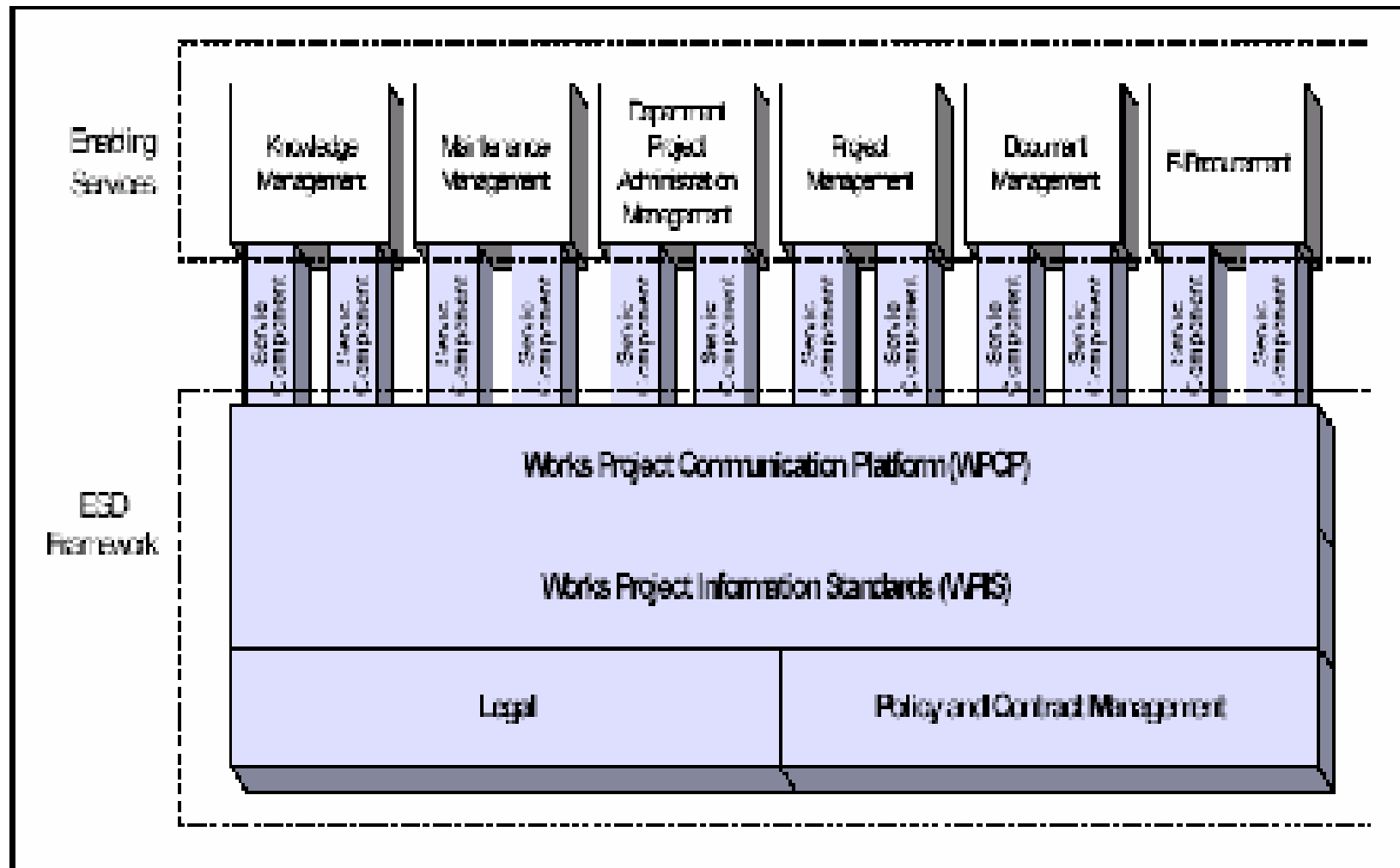
3. ESD the e-Government/Service platform of HK



Website: www.esd.gov.hk

4. Standards for Data Exchange in public projects

The Works Bureau's Framework



Layering Standard

Using ISO 13567 as the basis, the following layer naming standard has been developed:

A	B					C	1	E	1	(1	I	J										
S	F	5	8	2	1	A	A	E	-	N	I	-	-	-	1	3	C	2	3	U	S	E	R

← Fields (refer to notes)

← Codes

Mandatory

Optional

Notes: A - Agent B - Element C - Presentation D - Status E - Sector F - Phase
 G - Project H - Scale I - Work package J - User define

5. Summary

- HK is very advanced in the use of BIM technologies;
- HK is slow in developing data standards due to its nature of free economy;
- HK is maturing the ESD platform which is an e-Government platform and will be used for the construction industry for project document exchanges.

Thank you!